

JR KYUSHU HOTELS



JR九州ホテルズ
JR KYUSHU HOTELS

THE BLOSSOM HIBIYA



A new landmark hotel opened with convenient access to Haneda International Airport, Hibiya Park, the Imperial Palace, and the Ginza district are all easily accessible on foot. The magnificent panoramic views extend to the downtown area of Tokyo below. The brilliant and sophisticated interior designs make our hotel bloom so that our guests will enjoy the historical and cultural traditions of Kyushu and Japan while creating new experiences and relationships. All nine varieties of guest rooms are located on the 19th floor and above. Each type of room includes a Japanese-style bathroom with ample washing and bathing space. Sunlight enters the spacious rooms through open-air windows creating an impressive atmosphere. Overnight guests may also use the fitness room free of charge. The Japanese restaurant Sotoroku serves both Western and Japanese buffet-style breakfast using foods and ingredients produced in Kyushu in the live kitchen. The restaurant has a Japanese sake bar designed in the style of yagura, traditional Japanese wooden frames.

Address

1-13 Shimbashi 1-chome, Minato-ku, Tokyo 105-0004 Japan
TEL : +81-3-3591-8702 FAX : +81-3-3591-8703
www.jrk-hotels.co.jp/Hibiya/en/

Access

A 5-min. walk from JR Shimbashi Station
A 4-min. walk from Shimbashi Station (Tokyo Metro Ginza Line)
A 5-min. walk from Shimbashi Station (TOEI TRANSPORTATION Asakusa Line)

Guest Rooms (255 Rooms)

Check-In 3:00pm Check-Out 11:00am



Rooms Type	Rooms	Size
Superior Double	80 rooms	22㎡
Superior Twin	123 rooms	25㎡
Superior King	15 rooms	25㎡
Deluxe Corner King	10 rooms	31㎡
Deluxe Corner Twin	10 rooms	34㎡
HIBIYA Suite (King)	6 rooms	53㎡
HIBIYA Suite (Twin)	6 rooms	61㎡
Universal Single	4 rooms	22㎡
Universal Double	1 room	31㎡

THE BLOSSOM KYOTO



We offer ten types of guest rooms including those equipped with three or four single-sized beds to accommodate various travel styles. All rooms incorporate a "Japanese atmosphere" around their designs. During your stay, you can relax in the lounge exclusive for overnight guests and enjoy the arts produced in Kyoto. "Yudokoro" (big baths)" is also available, so you can alleviate your fatigue from walking around Kyoto, while appreciating mosaic tile arts which describe "Sakura (cherry blossoms)" in the female bath, and "A path of takebayashi (a bamboo forest)" in the male bath respectively, and an open-air garden spot outside the windows. At the restaurant, please enjoy the "breakfast buffet of Kyoto". All your senses will be delighted with our original "Nouvelle cuisine", a combination of foods and ingredients of Kyoto and Kyushu, which was developed while embracing the food culture developed here in Kyoto.

Address

140-2 manjuji-cho, Higashinotouin-Higashiru,Gojo-dori,
Shimogyo-ku,Kyoto City,Kyoto 660-8104 Japan
TEL : +81-75-754-8735 FAX : +81-75-741-7587
www.jrk-hotels.co.jp/Kyoto/en/

Access

A 2-min walk from entrance number 1 Gojo Station (Subway Karasuma Line)

Guest Rooms (180 Rooms)

Check-In 3:00pm Check-Out 11:00am



Rooms Type	Rooms	Size
Moderate Double	23 rooms	23~26㎡
Moderate King	24 rooms	23㎡
Moderate Twin	54 rooms	25㎡
Moderate Triple	30 rooms	28㎡
Moderate Triple -NAGOMI-	5 rooms	33㎡
Superior Twin	15 rooms	27㎡
Deluxe Twin	16 rooms	27~28㎡
Deluxe Fourth -NAGOMI-	8 rooms	55㎡
Premium Twin	3 rooms	49㎡
Universal Shingle	2 rooms	25㎡

THE BLOSSOM HAKATA Premier



The convenient location allows easy access on foot to the Nakasu-Kawabata district in which traditional temples and shrines such as Kushida Shrine are located within a historical atmosphere. THE BLOSSOM HAKATA Premier is your best hotel as a sightseeing hub in Fukuoka City. "Stylish Hakata entertains you with the finest hospitality." Based on this concept, the exterior and interior design of our hotel expresses Hakata's history, culture, and aesthetics which have been continuously passed down here. On the top Hakata Floor there are 13 special guest rooms as well as the special Hakata Lounge, available exclusively for overnight guests of the Hakata Floor. Have a splendid time in our stylish and sophisticated Hakata Premier. As an added service, we provide several Japanese culture experience programs such as walking tours in Hakata. Based on the theme, "Experience the local growing environment in Kyushu", the restaurant Nine Doors serves a variety of dishes including those grilled by firewood using foods and ingredients produced in Kyushu. The well-lit open kitchen serves a buffet-style breakfast with specialties from both Western and Japanese cuisine.

Address

8-12 Hakata-ekimae 2-chome, Hakata-ku, Fukuoka City, Fukuoka
812-0011 Japan TEL : +81-92-431-8702 FAX : +81-92-431-8712
www.jrk-hotels.co.jp/Hakata_premier/en/

Access

A 7-min. walk from JR Hakata Station
A 2-min walk from Exit 5 Kushida Shrine Station (Fukuoka City Subway Nanakuma Line)

Guest Rooms (237 Rooms)

Check-In 3:00pm Check-Out 11:00am



Rooms Type	Rooms	Size
Moderate Double	90 rooms	21~24㎡
Moderate King	18 rooms	27㎡
Deluxe Twin	70 rooms	30~37㎡
Comfort Deluxe Twin NAGOMI	45 rooms	31~32㎡
Universal Double	1 room	31㎡
HAKATA Floor(Club Floor)		
HAKATA King	3 rooms	28~31㎡
HAKATA Premium King	2 rooms	44~45㎡
HAKATA Suite(King)	1 room	62㎡
HAKATA Premium Twin	5 rooms	44~54㎡
HAKATA Suite(Twin)	2 rooms	54~61㎡

THE BLOSSOM KUMAMOTO



Our guest rooms are arranged to surround the inner garden with a lagoon, so you can enjoy beautiful sceneries from your room, such as mountains in Aso, Mt. Kinpo, the city of Kumamoto, or a distant view of the Sea of Ariake, no matter which direction the room faces. All rooms feature a design with a calm atmosphere, and you can relax while feeling the nature of Kumamoto or the shading of the sunlight. We also have a suite where the nature, culture, and traditions of Kumamoto are incorporated into its interior. Ample facilities are also available including big baths or saunas where you can enjoy bathing while viewing rich nature gardens, and the fitness room flooded with skylight. For breakfast, we offer a buffet that is full of selected foods from Kumamoto and other areas of Kyushu. Please enjoy a delicious breakfast at our restaurant filled with the morning light while overlooking the Kumamoto cityscape or the inner garden with a chapel.

Address

15-26 Kasuga 3-chome, Nishi-ku, Kumamoto City, Kumamoto 860-0047 Japan
TEL : +81-96-327-8763 FAX : +81-96-327-8387
www.jrk-hotels.co.jp/Kumamoto/en/

Access

Less than one minute on foot from JR Kumamoto Station Shirakawa Exit (the East Exit)

Guest Rooms (203 Rooms)

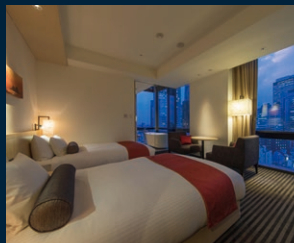
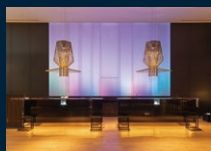
Check-In 3:00pm Check-Out 11:00am



Rooms Type	Rooms	Size
Moderate Business Double	12 rooms	20㎡
Moderate Double	102 rooms	22~25㎡
Moderate Twin	4 rooms	23~24㎡
Deluxe Corner King	12 rooms	33㎡
Deluxe Twin	36 rooms	30~33㎡
Deluxe Twin -NAGOMI-	27 rooms	30~32㎡
Premium King	1 room	40㎡
Premium Twin	7 rooms	44~47㎡
Universal Double	1 room	36㎡
Hanare ~ THE SUITE	1 room	126㎡

JR KYUSHU HOTEL

Blossom Shinjuku



Address

2-6-2 Yoyogi, Shibuya-ku, Tokyo 151-0053 Japan
TEL : +81-3-5333-8687 FAX : +81-3-5333-8685
www.jrk-hotels.co.jp/Shinjuku/en/

Address

A 3-min. walk from JR Shinjuku Station
A 3-min. walk from JR Shinjuku Expressway Bus Terminal

Opened in 2014. This hotel lies in the heart of Tokyo Metropolis and provides an elegant space in addition to its optimal location being only a three-minute walk from the South Entrance/Exit of JR Shinjuku Station. This hotel features various types of spacious guest rooms, which have large windows extending from the floor to the ceiling. The rooms have US SIMMONS beds which are comfortable.

Guest Rooms (238 Rooms)

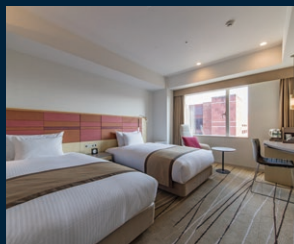
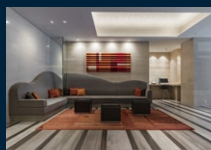
Check-In 2:00pm Check-Out 11:00am



Rooms Type	Rooms	Size
Standard Double	59 rooms	18㎡
Standard Double(Queen)	45 rooms	19㎡
Superior Twin	103 rooms	25㎡
Deluxe Twin	15 rooms	30㎡
Deluxe Corner Twin	13 rooms	38㎡
Premium Twin	2 rooms	38㎡
Universal Twin	1 room	25㎡

JR KYUSHU HOTEL

Blossom Hakata Chuo



Address

2-2-11 Hakata-ekimae Hakata-ku, Fukuoka City, Fukuoka 812-0011 Japan
TEL : +81-92-477-8739 FAX : +81-92-477-8789
www.jrk-hotels.co.jp/Hakatachuo/en/

Address

A 2-min. walk from Hakata Guchi of JR Hakata Station

Good location - only a two-minute walk from JR Hakata Station. This hotel features spacious guest rooms and the high-quality design with red as an accent, which is sophisticated to show Hakata's Iki, stylishness. You can enjoy a buffet style breakfast comprising both Japanese and Western dishes which use a variety of fresh ingredients.

Guest Rooms (247 Rooms)

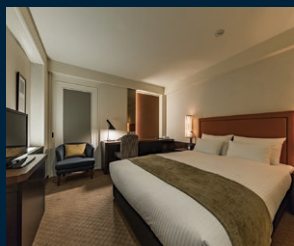
Check-In 2:00pm Check-Out 11:00am



Rooms Type	Rooms	Size
Standard Double	65 rooms	19~20㎡
Superior Double	26 rooms	23㎡
Superior Twin	129 rooms	25㎡
Deluxe Twin	22 rooms	29㎡
Premium Twin	4 rooms	29㎡
Universal Double	1 room	25㎡

JR KYUSHU HOTEL

Blossom Fukuoka



Address

2-2-4 Hakataekihigashi, Hakata-ku, Fukuoka City, Fukuoka 812-0013 Japan
TEL : +81-92-413-8787 FAX : +81-92-413-9746
www.jrk-hotels.co.jp/Fukuoka/en/

Address

A 2-min. walk from Chikushi Exit, JR Hakata Station

Ideal location - only a two-minute walk from Hakata Station. The hotel offers excellent hospitality in a traditional atmosphere surrounded by European style decor. Each guest room has US Serta mattresses which are comfortable, and a large desk which is ideal for people on business trips.

Guest Rooms (90 Rooms)

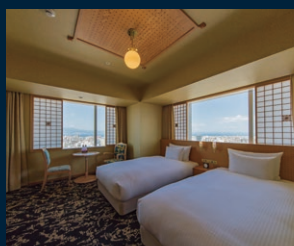
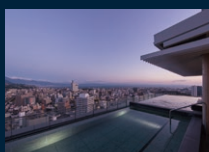
Check-In 2:00pm Check-Out 11:00am



Rooms Type	Rooms	Size
Standard Single	14 rooms	15~19㎡
Superior Double	68 rooms	21㎡
Standard Twin	7 rooms	24㎡
Deluxe Twin	1 room	44㎡

JR KYUSHU HOTEL

Blossom Oita



Address

1-14 Kanamemachi, Oita City, Oita 870-0831 Japan
TEL : +81-97-578-8719 FAX : +81-97-578-8709
www.jrk-hotels.co.jp/Oita/en/

Address

Less than a 1-min. walk from Funai Chuo Exit (the North Entrance/Exit) of JR Oita Station

This midtown hotel offers a warm welcome to its guests, even in the bustle of the city. The furniture and interior decor is in keeping with a woody Japanese style. All guest rooms command a fine view from the upper floors. An open-air natural hot spring on the rooftop terrace, 80 meters above ground level, gives a sweeping view over the whole downtown and bay.

Guest Rooms (190 Rooms)

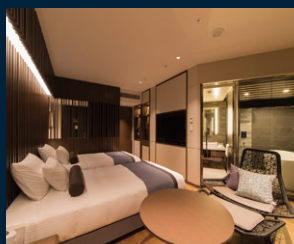
Check-In 2:00pm Check-Out 11:00am



Rooms Type	Rooms	Size
Standard Double	94 rooms	19~20㎡
Superior Twin	30 rooms	24~27㎡
Superior Double	29 rooms	22㎡
Deluxe Twin	19 rooms	31㎡
Premium King	7 rooms	30㎡
Premium Twin	10 rooms	32㎡
Universal Single	1 room	25㎡

JR KYUSHU HOTEL

Blossom Naha



Address

2-16-1 Makishi, Naha City, Okinawa 900-0013 Japan
TEL : +81-98-861-8700 FAX : +81-98-862-8739
www.jrk-hotels.co.jp/Naha/en/

Address

A 20-min. ride from Naha Airport by taxi
[Urban Monorail/Yui Rail]
A 5-min. walk from Miebash Station

Opened in June 2017. Blossom Naha lies in the midtown and has good access to anywhere, especially Naha's largest and bustling shopping and entertainment district, Kokusai Dori, which literally means international street. The interior design reflects the ocean and the sky in Okinawa. The expansive blue Okinawan skies can be seen from the guest rooms' large windows.

Guest Rooms (218 Rooms)

Check-In 3:00pm Check-Out 11:00am



Rooms Type	Rooms	Size
Superior Double	58 rooms	23㎡
Superior Twin	129 rooms	26㎡
Deluxe King	10 rooms	28㎡
Deluxe Twin	16 rooms	33㎡
Premium Twin	4 rooms	34㎡
Universal Twin	1 room	26㎡

JR KYUSHU HOTEL NAGASAKI



Favorably located and directly connected to Nagasaki Station. The guest rooms are decorated in a simple yet modern style. But, you can enjoy the exotic feeling of Nagasaki in the detail of the rooms. The hotel provides US SIMMONS Beds for maximum comfort.

Address

1-1 Onouemachi, Nagasaki City, Nagasaki 850-0058 Japan
TEL : +81-95-832-8000 FAX : +81-95-832-8001
www.jrk-hotels.co.jp/Nagasaki/en/

Access

Approximately 3 to 5 minutes on foot from JR Nagasaki Station East Exit.

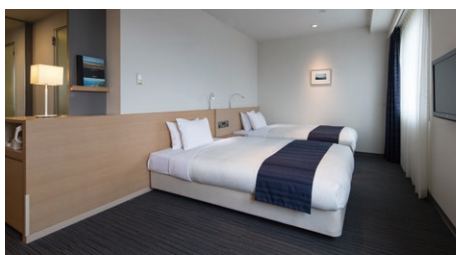
Guest Rooms (144 Rooms)

Check-In 2:00pm Check-Out 11:00am



Rooms Type	Rooms	Size
Standard Single	79 rooms	15㎡
Standard Double	35 rooms	17㎡
Superior Double	5 rooms	21㎡
Standard Twin	10 rooms	21~25㎡
Deluxe Twin	14 rooms	28㎡
Universal Twin	1 room	26㎡

JR KYUSHU HOTEL MIYAZAKI



Located next to the West Entrance/ Exit of Miyazaki Station. All rooms have a spacious bathroom with a washing area. There are a variety of buffet menus using local ingredients from Miyazaki, which provides both Japanese and Western meals.

Address

1-10 Nishikimachi, Miyazaki City, Miyazaki 880-0811 Japan
TEL : +81-985-29-8000 FAX : +81-985-29-8556
www.jrk-hotels.co.jp/Miyazaki/en/

Access

Within a 1-min. walk from the West Entrance/ Exit of JR Miyazaki Station

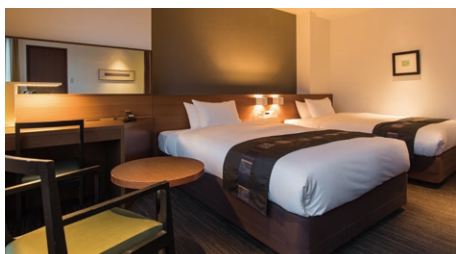
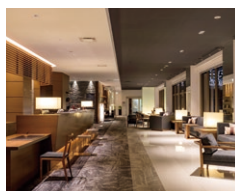
Guest Rooms (141 Rooms)

Check-In 2:00pm Check-Out 11:00am



Rooms Type	Rooms	Size
Standard Double	105 rooms	16㎡
Deluxe Double	5 rooms	32㎡
Deluxe Twin	29 rooms	32㎡
Premium Twin	1 room	50㎡
Universal Twin	1 room	32㎡

JR KYUSHU HOTEL KAGOSHIMA



Direct connection to Kagoshima Chuo Station enables convenient access. The guest rooms comprise various types. According to your purpose, you can choose a Northside guest room with a simple and relaxed atmosphere, or a Southside guest room with a bright and sophisticated design.

Address

1-1-2 Take, Kagoshima City, Kagoshima 890-0045 Japan
TEL : +81-99-213-8000 FAX : +81-99-213-8029
www.jrk-hotels.co.jp/Kagoshima/en/

Access

Directly connected to JR Kagoshima-Chuo Station

Guest Rooms (247 Rooms)

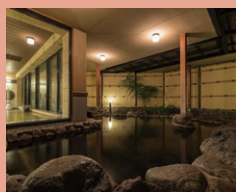
Check-In 2:00pm Check-Out 11:00am



Rooms Type	Rooms	Size
Standard Single	86 rooms	15㎡
Standard Double	97 rooms	16㎡
Ladies Single	16 rooms	16㎡
Deluxe Double	4 rooms	33㎡
Standard Twin	24 rooms	24㎡
Deluxe Twin	19 rooms	30~33㎡
Universal Twin	1 room	36㎡

別府温泉 一竹と梅のお宿

花べっふ



Hana Beppu is an accommodation geared towards female guests. Located only a six-minute walk from Beppu Station. This accommodation is elaborately designed with bamboo and camellia flowers to create a romantic and peaceful atmosphere. The guest rooms are semi-Western in style and have both tatami mats and flooring.

Beppu Onsen Taketotsubakinooyado Hanabeppu

Address

16-50 Kamitanoyumachi, Beppu City, Oita 874-0908 Japan
TEL : +81-977-22-0049 FAX : +81-977-22-0211
www.hanabeppu.jp/en/

Access

A 6-min. walk from the West Entrance/ Exit of JR Beppu Station

Guest Rooms (30 Rooms)

Check-In 3:00pm Check-Out 11:00am



Rooms Type	Rooms	Size
[Special Room] Oborozuki, Kokonoe, Sasameyuki	Each 1 room	50~55㎡
[Japanese Western Room] Hagoromo	12 rooms	42~49㎡
[Japanese Western Room] Yumeakari	1 room	41㎡
[Japanese Style Room] Chidori	8 rooms	34~42㎡
[Japanese Style Twin Room] Otome	6 rooms	27~29㎡

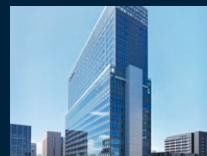
Convenient locations

Top-level appointments

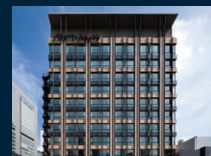
Never-ending professional service

We are JR Kyushu Hotels

THE BLOSSOM
HIBIYA



JR KYUSHU HOTEL
Blossom Shinjuku



THE BLOSSOM
HAKATA Premier



JR KYUSHU HOTEL
Blossom Fukuoka



JR KYUSHU HOTEL
Blossom
Hakata Chuo



THE BLOSSOM
KYOTO

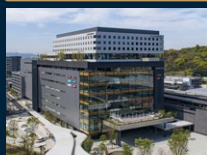
Beppu Onsen
Taketotsubakinooyado
Hanabeppu



JR KYUSHU HOTEL
Blossom Oita



THE BLOSSOM
KUMAMOTO



JR HOTEL
NAGASAKI



JR HOTEL
KAGOSHIMA



JR HOTEL
MIYAZAKI



JR KYUSHU HOTEL
Blossom Naha





JR KYUSHU HOTELS

www.jrk-hotels.co.jp