

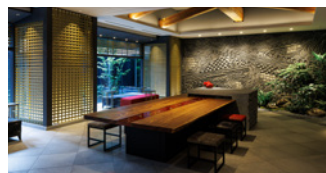


Soft,gentle connections

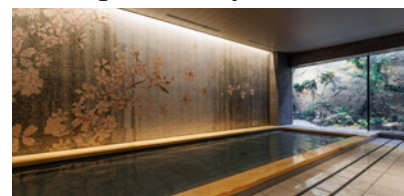
Kyoto has beautiful scenery which changes with each of the four seasons, and you can see signs of its history here and there.

Walk through the passage garden resembling a traditional *machiya*, a wooden house of common people, then listen to the comfortable sounds and smell the aromas spreading around the spaces that are waiting for you.

Welcome back to your cozy home in Kyoto.



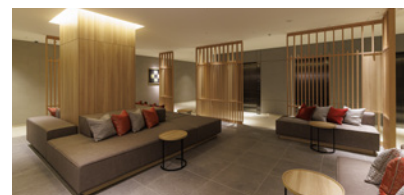
Hotel guests only



Bathing Area

The mosaic tiles arts in the big baths describe "Sakura (cherry blossoms)" in the female bath, and "A path of takebayashi (a bamboo forest)" in the male bath, respectively. You can find an open-air garden spot outside the windows.

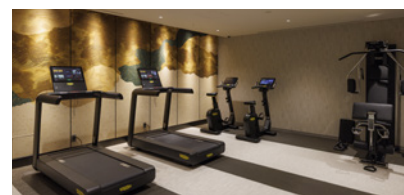
Opening hours 15:00~25:00 / 6:00~9:00



Guest Lounge

This lounge, where you can relax while appreciating the arts produced in Kyoto, is exclusive for overnight guests. Please help yourself to drinks or snacks which are available free of charge during your stay.

Opening hours 15:00~25:00 / 6:00~11:00



Fitness Room

You can refresh yourself physically and mentally using a running machine, stationary bike, and other machines in the fitness room during your stay.

Opening hours 24H
※ We do not rent sportswear or shoes.

Facilities

9F	Rooms
2F	
1F	Front Desk / Lobby
B1F	

180 rooms

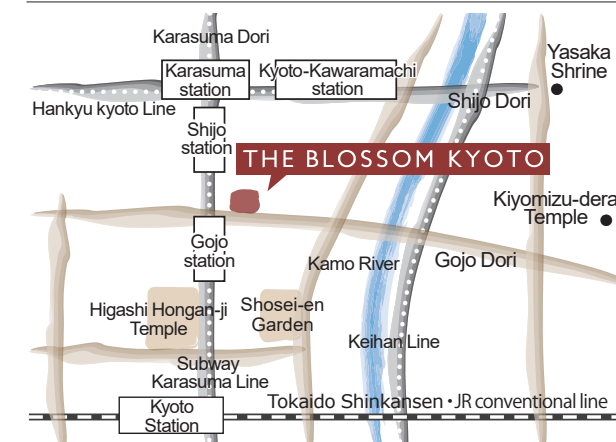
All of our rooms are non-smoking.

Check-in3:00 p.m.

Check-out11:00 a.m.

- ① Restaurant (ground floor)
- ② Smoking booth (ground floor)
- ③ Public lavatory (ground floor)
- ④ Aino-machi-no-kura (ground floor)
(Communication space)
- ⑤ Guest lounge (1st basement floor)
- ⑥ Bathing area (1st basement floor)
- ⑦ Fitness room (1st basement floor)
- ⑧ Vending machines (1st basement floor)
- ⑨ Ice maker machines (1st basement floor)
- ⑩ Coin-operated washing machines
(1st basement floor)

Access



About a two-minute walk from Subway Karasuma Line Gojo station.

1 stop from Kyoto Station. Convenient access to Gion area.

THE BLOSSOM KYOTO

140-2, manjuji-cho, Higashinotouin-Higashiiru, Gojo-dori, Shimogyo-ku, Kyoto-shi, Kyoto 600-8104

TEL +81-75-754-8735

<https://www.jrk-hotels.co.jp/Kyoto/>

JR KYUSHU HOTELS

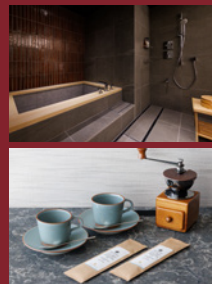




Premium Twin

(49㎡ Bed size 140cm×200cm · 3rooms Capacity : 2people)

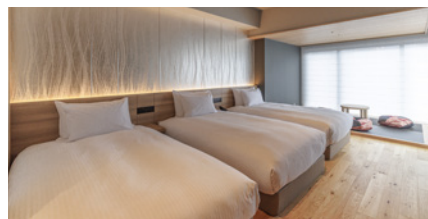
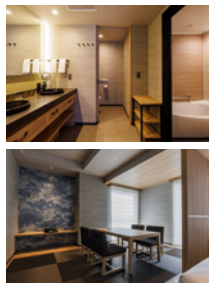
This large, 49㎡ room is a Junior Suite, which has a living room with a *tatami* floor and a wooden-floored bedroom. The bathtub in this room varies from one inspired by a *Goemon buro* (a *Goemon* bath, in which a bathtub is heated on a direct fire) to the one using Japanese cypress and Towada stone (natural stone produced only in Yakushimori (mountain) in Akita Prefecture), depending on the room. Enjoy a luxury hotel stay in this extraordinary space.



Deluxe Quad with TATAMI space

(55㎡ Bed size 110cm×200cm · 8rooms Capacity : 4people)

There are four single-size(110cm×200cm) beds in this large, 55㎡ room. At the *tatami* space in the back of the room, green tea is provided for you, so you can relax with your companions. Two bathroom sinks allow you to get prepared without rushing each other in the morning. This Deluxe Quad room is the ideal choice for staying with your family or in a group.



Deluxe Twin

(27~28㎡ Bed size 120cm×200cm 16rooms Capacity : 2people)

Just take off your shoes and relax in this *tatami* room. You can enjoy the landscape of Kyoto city from the wide window stretching from the ceiling to the floor.

Moderate Triple with TATAMI space

(33㎡ Bed size 110cm×200cm 5rooms Capacity : 3people)

Three single-size(110cm×200cm) beds are arranged in a 33㎡ wooden floor room. There is a *tatami* space in the back room, where you can relax with your shoes taken off.
※This type of room is equipped with a shower booth only. Please note that a bathtub is not available.

Superior Twin

(27㎡ Bed size 120cm×200cm 15rooms Capacity : 2people)

This room is equipped with a bathroom with a bathing place. You can take off your shoes to relax on a *tatami* floor and feel the traditional atmosphere of Kyoto from its chic interior, such as wall-covering using Japanese papers.

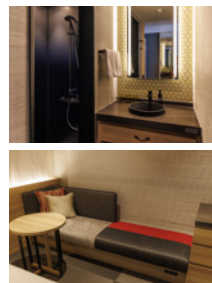


Moderate King

(23㎡ Bed size 180cm×200cm 24rooms Capacity : 2people)

This type is equipped with a 180cm wide king-size bed on a *tatami* floor, where you can take off your shoes to relax. Enjoy this rich space by yourself or share with your companion.

※This type of room is equipped with a shower booth only. Please note that a bathtub is not available.



Moderate Triple

(28㎡ Bed size 110cm×200cm 30rooms Capacity : 3people)

Three single-size(110cm×200cm) beds are arranged in a 28㎡ wooden floor room. The shower booth is separated, meaning that this room type is the ideal choice for families or groups.

※This type of room is equipped with a shower booth only. Please note that a bathtub is not available.

Moderate Double

(23~26㎡ Bed size 160cm×200cm 23rooms Capacity : 2people)

This room is *tatami*-floored so that you can take off your shoes and relax. The room is equipped with a separate shower booth and a 160cm wide queen-size bed.

※A desk is provided in some rooms.
※This type of room is equipped with a shower booth only. Please note that a bathtub is not available.

Moderate Twin

(25㎡ Bed size 110cm×200cm 54rooms Capacity : 2people)

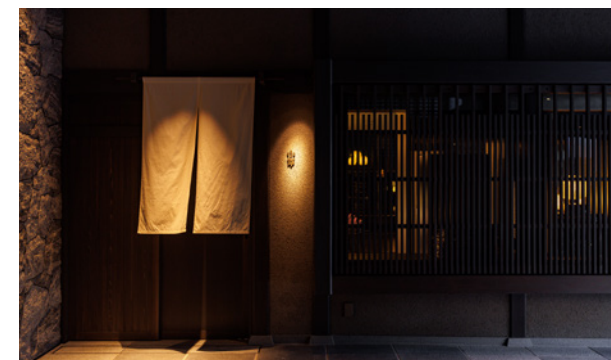
Two 110cm wide beds are arranged in a Hollywood style on a *tatami* floor, where you can take off your shoes to relax. They are separate in some rooms.

※This type of room is equipped with a shower booth only. Please note that a bathtub is not available.

Wheelchair Accessible Single (Universal Single)

(25㎡ Bed size 110cm×200cm 2rooms Capacity : 1people)

Anyone can relax in this room, including guests with disabilities, older people, or those with children.



Restaurant

京都五条小野

Kyoto Gojo Ono

KYOTO GOJO ONO

While embracing the food culture developed here in Kyoto, we established our original "Nouvelle cuisine" by fusing foods produced in Kyoto and Kyushu. Enjoy the food of "Kyoto" with unique combinations to gratify your senses.

Capacity 59 seats

(Main dining area 42 seats, Japanese sake bar area 17 seats)

TEL +81-75-708-5533

Breakfast

Breakfast includes freshly polished rice cooked with hagama (a cooking stove), additive-free freshly baked breads, arrangements of obanzai composed of seasonal and healthy foods, and prix fixe plates, which fulfill your body and spirit.

Opening hours

6:30~11:00 (Last order 10:30)



Lunch

We offer lunch courses and a la carte menus that allow you to enjoy our specialties to the fullest.

Enjoy colorful appetizers and our chef's specialty "sous-vide" main dishes.

Opening hours

11:00~14:00 (Last Order 13:15)



Dinner

We offer you course menus or a la carte menu of Nouvelle cuisines, a combination of Japanese and French cuisine, to bring you to the world of Kyoto's distinctive and beautiful dinner. You can taste fresh fish or meat cooked with a low-temperature method.

Opening hours

18:00~22:00 (Last Order 21:00)



Bar

Give a toast to the beautiful Kyoto night with a glass of special alcohol drinks. The menu ranges from Kyoto's specialty's sake to wines made in Kyushu.

Opening hours 18:00~23:00 (Last Order 22:00)